



East Riverside/Garden District/Irish Channel/ St. Thomas Group A Community Meeting

City of New Orleans

January 14, 2021



Agenda and House Rules

- **Introductions**

Talva Burnette, Community Liaison, Neighborhood Engagement Office

- **East Riverside/Garden District/Irish Channel/St. Thomas Group A Project Overview**

Ainsley Fischer, Project Manager, Department of Public Works

Michael Godzinski, CNO Archaeologist

Philip Gilmore, Historical Preservationist Specialist

- **What to expect during construction**

Nakeila Polk, Community Outreach Manager, RoadworkNOLA

- **Questions & Answers**

Talva Burnette

House Rules

- Allow one person to speak at a time.
- Questions about the project can be submitted via email to undefined talva.burnette@nola.gov and via text to 504-608-8306.
- Keep your comments concise and relevant.



Safety Guidelines for Contractors During COVID-19

- Single point of entry into the jobsite and check-in/check-out of all workers. Temperature scans should be administered as a part of check-in protocol.
- Thorough daily cleaning of work areas. Wipe down of surfaces and frequently touched items.
- Handwashing stations provided with mandated proper handwashing at intervals throughout the day.
- No interactions with more than 10 people and maintaining at least 6 feet space between workers.
- Educational literature posted in multiple languages, along with daily training on appropriate conduct.
- Immediate reporting of any cases of known COVID-19.
- All progress meetings will continue as virtual meetings.



Capital Improvement Program Highlights

- **More than \$2.2B worth of combined DPW / SWBNO work**
 - Most comprehensive infrastructure program our region has seen in a generation.
 - More than **200** individual projects - every neighborhood will feel a positive impact.
 - **Multiple Funding Sources:** FEMA-funded road / waterline work, FEMA-funded Hazard Mitigation Grant Program (HMGP) projects, HUD-funded National Disaster Resiliency Competition (NDRC) grant projects, SWB-funded Sewer System Evaluation and Rehabilitation Program (SSERP) (sewer consent decree) work and City-funded bond project work.
 - Work will create **thousands** of construction jobs across the city and maximize economic opportunity for the City's small and disadvantaged

Types of CIP Construction

Full Reconstruction

Repair sewerage, water, and drainage lines, rebuild the street entirely, and repair sidewalks and curbs.

Patch Mill/Overlay

Repave the asphalt roadway from curb to curb and repair damaged sidewalks.

Patch Concrete

Remove damaged portions of the concrete roadway and replace it with new smooth concrete pavement and repair damaged sidewalks.

Types of CIP Construction

Incidental Road Repairs

Remove damaged portions of the asphalt roadway and replace it with new smooth pavement.

Non-Paving Incidentals

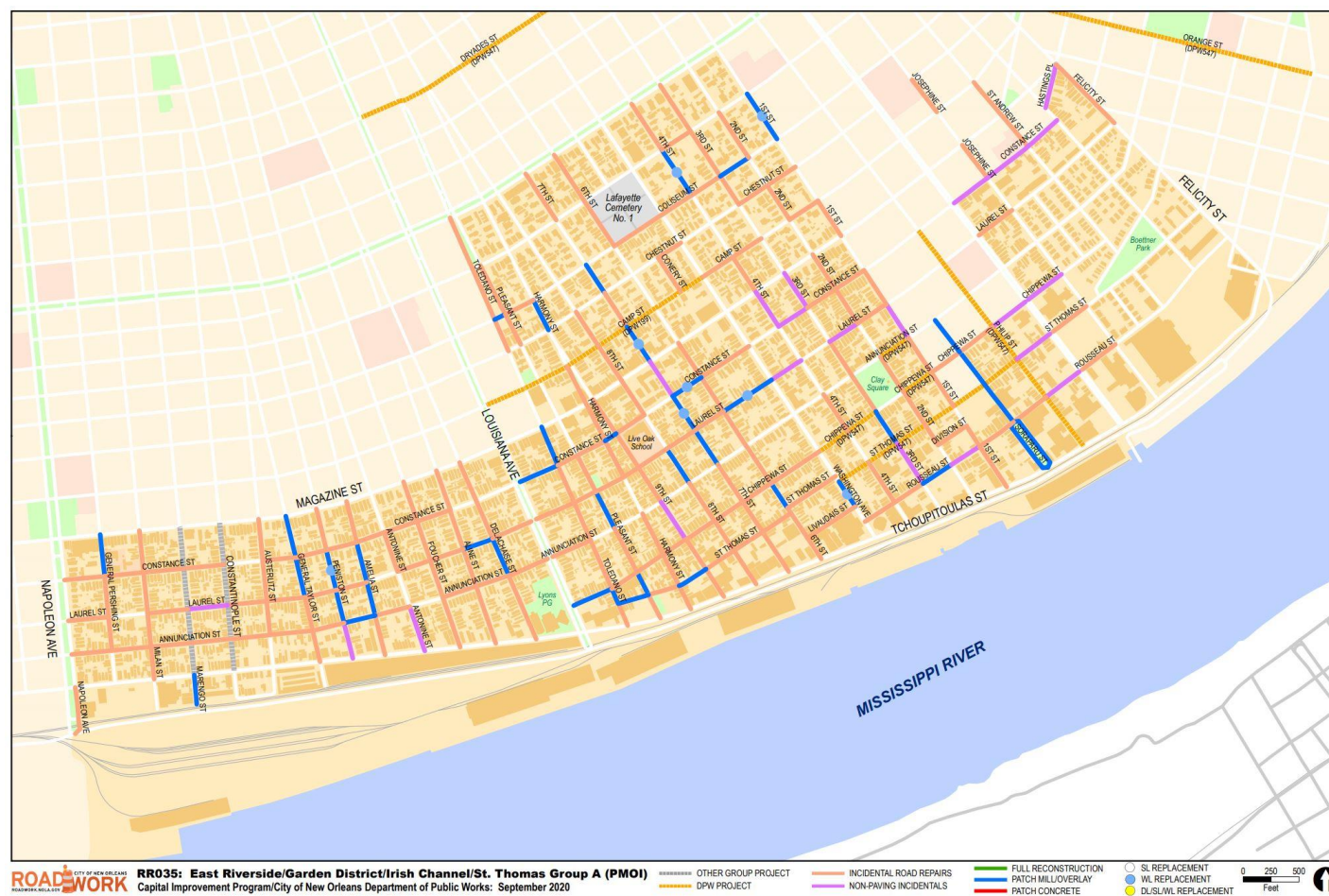
Repair damaged sidewalks, driveway aprons and curbs within the public right-of-way.

Other Group Project

Street is in the design phase or is planned to be built in a future project.

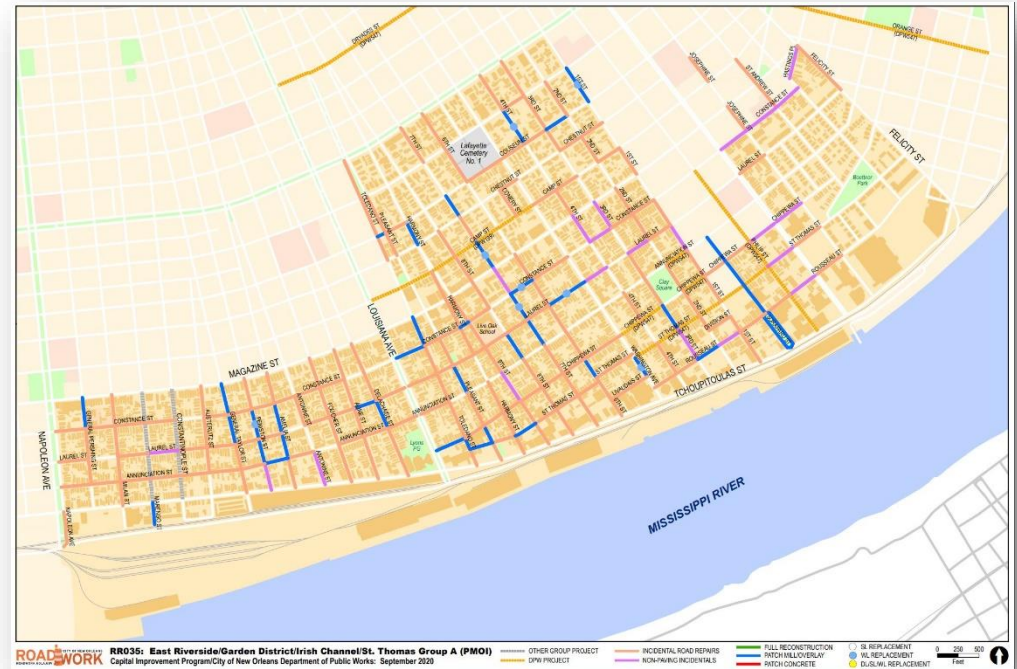
East Riverside/Garden District/Irish Channel/ St. Thomas Group A

Patch, Mill, Overlay and Incidental Road Repairs



Project Overview

- **Design:** Integrated Logical Support, Inc.
- **Construction:** Hard Rock Construction, LLC
- **Construction Cost:** Approximately \$7M Project
- **Timeline:** Project will begin January 2021 and be completed in spring 2022



Scope of work

- Repave the asphalt roadway from curb-to-curb;
- Patch the roadway with asphalt or concrete;
- Repair damaged sidewalks and driveway aprons;
- Install Americans with Disabilities Act-compliant curb ramps at intersection; and
- Replace / repair damaged underground water or drainage lines.

Waterline Replacements or Repairs

- Minimal water service disruptions
- Notifications will be sent to residents 48-hours prior to full waterline closures and 24-hours notice will be given for waterline test closures (per Louisiana Department of Health guidelines)



Patch Mill / Overlay



- Roadway will be re-surfaced with asphalt
- Repairs may be made to some damaged curbs, sidewalks and driveway aprons



Sidewalks

- Sidewalk panels adjacent to Americans with Disabilities Act (ADA)-compliant ramps will be replaced with new sidewalks.
- New sidewalks and ramps will meet ADA-regulations.



Americans with Disabilities Act-Compliant Curb Ramps



Americans with Disabilities Act (ADA)-compliant curb ramps at sidewalk corners ensure accessibility for people who are visually or physically impaired, using wheelchairs or strollers.

East Riverside/Garden District/Irish Channel/ St. Thomas Group A



Existing conditions on the 700 block of Amelia Street.

Future Conditions



An example of a repaved area on the Little Woods Group A project.

Project Timeline

<u>Milestone</u>	<u>Date</u>
Construction Start	January 2021
Construction Complete	Spring 2022

* Please note that all schedules are subject to change and weather delays.

Archaeology and Historic Preservation

- **Project may involve archaeology**

- Site may include prehistoric and or colonial sites. If so, an archaeological monitor will be onsite where digging occurs, for example, subterranean utility work in archaeologically sensitive areas or near cemeteries.
- Email Archaeologist, Michael Godzinski at archaeology@nola.gov

- **Project may also involve historic preservation**

- Character Defining Features in National Register Historic Districts may include stone curbs, street name tiles, brick or stone sidewalks, brick gutter bottoms and two-track driveways to name a few.
- For a complete slideshow of Character Defining Features, visit <https://roadwork.nola.gov/historic-preservation/>
- Email Historic Preservation Specialist, Philip Gilmore at historicpres@nola.gov

What to Expect During Construction



Sequencing of this project will be communicated with residents upon finalization. There will be signage placed prominently to indicate road closures for vehicular, pedestrian and bike traffic. Impacts related to sequencing will be communicated to the community by the RoadworkNOLA office.

Temporary construction impacts

- Additional construction equipment –
 - **Staging for this project has yet to be determined.**
- Limited parking availability
- Sounds
- Dust

Efforts to minimize construction impacts

- ✓ Construction signage placed around the sites.
- ✓ Any temporary closures will be communicated in advance.
- ✓ Construction equipment will not be staged in areas that prohibit residential access and parking.
- ✓ Any changes to garbage and US Postal services will be communicated in advance.
- ✓ Residents will be informed throughout construction.

Regular work hours are Monday-Friday 7 a.m. to 5:30 p.m.

Permission for occasional weekend work may be granted, if required.

Keeping You Informed Roadwork.nola.gov

The screenshot shows the Roadwork.nola.gov website interface. At the top, there's a navigation bar with social media icons, the site logo, and an 'About RoadWork' link. Below the navigation bar is a search bar with the text 'Get Started Here! Enter an address to get block-to-block details on construction projects'. A callout points to the search bar with the text 'Enter your address here'. To the left of the map is a 'Show Layer' panel with three options: 'Pavement Condition', 'Planned Road Construction' (which is selected), and 'Roads Under Construction Now'. Below this is a 'Legend' panel for 'Planned Road Construction' with various categories like 'Full Reconstruction', 'Patch Mill/Overlay', 'Patched Concrete', etc. A callout points to the legend with the text 'Choose to view pavement condition, planned work or roads under construction now'. On the right side of the map, a callout points to the map area with the text 'Tell us what you think of the site or download the data'. At the bottom of the map, there's a detailed view of a specific location: '6800 block of Vicksburg St' from 'Chapelle St to Mouton St in Lakeview'. Below this, there's a 'Pavement Condition' section showing 'Failure' and a 'Work Status' section showing project details for 'RR3 - Lakeview North Group F (FRC)' with a schedule from 'Jul-Sep 2021' to 'Jul-Sep 2022'. A callout points to this detailed view with the text 'Get block-by-block information about the work schedule, type of repairs and what to expect during construction'. On the right side of the screenshot, there's a large white box with the text 'CHECK OUT THE NEW FEATURES!' followed by a list of features: 'mobile-friendly', 'clean design', 'improved functionality', and 'enhanced content'. Below this list is the website URL 'roadwork.nola.gov'.

Enter your address here

Choose to view pavement condition, planned work or roads under construction now

Tell us what you think of the site or download the data

Get block-by-block information about the work schedule, type of repairs and what to expect during construction

ROADWORK CITY OF NEW ORLEANS
ROADWORK.NOLA.GOV

CHECK OUT THE NEW FEATURES!

- ✓ mobile-friendly
- ✓ clean design
- ✓ improved functionality
- ✓ enhanced content

roadwork.nola.gov

6800 block of Vicksburg St
From Chapelle St to Mouton St in Lakeview, LA

Pavement Condition
Failure

Work Status

Project	Project ID	Repair Type	Status
RR3 - Lakeview North Group F (FRC)	RR088	Full Reconstruction	Planned

Schedule
Start: Jul-Sep 2021
End: Jul-Sep 2022

PLEASE NOTE: The content provided on roadwork.nola.gov is subject to change pending unforeseen site conditions, weather delays, constructability issues, etc.

Contact Us



Nakeila Polk,
Outreach Manager
roadwork@nola.gov
504.658.7623



Phone

504.658.ROAD (7623)



Email

roadwork@nola.gov



Website

roadwork.nola.gov



Social Media

[@roadworkNOLA](https://twitter.com/roadworkNOLA)



City of New Orleans

